


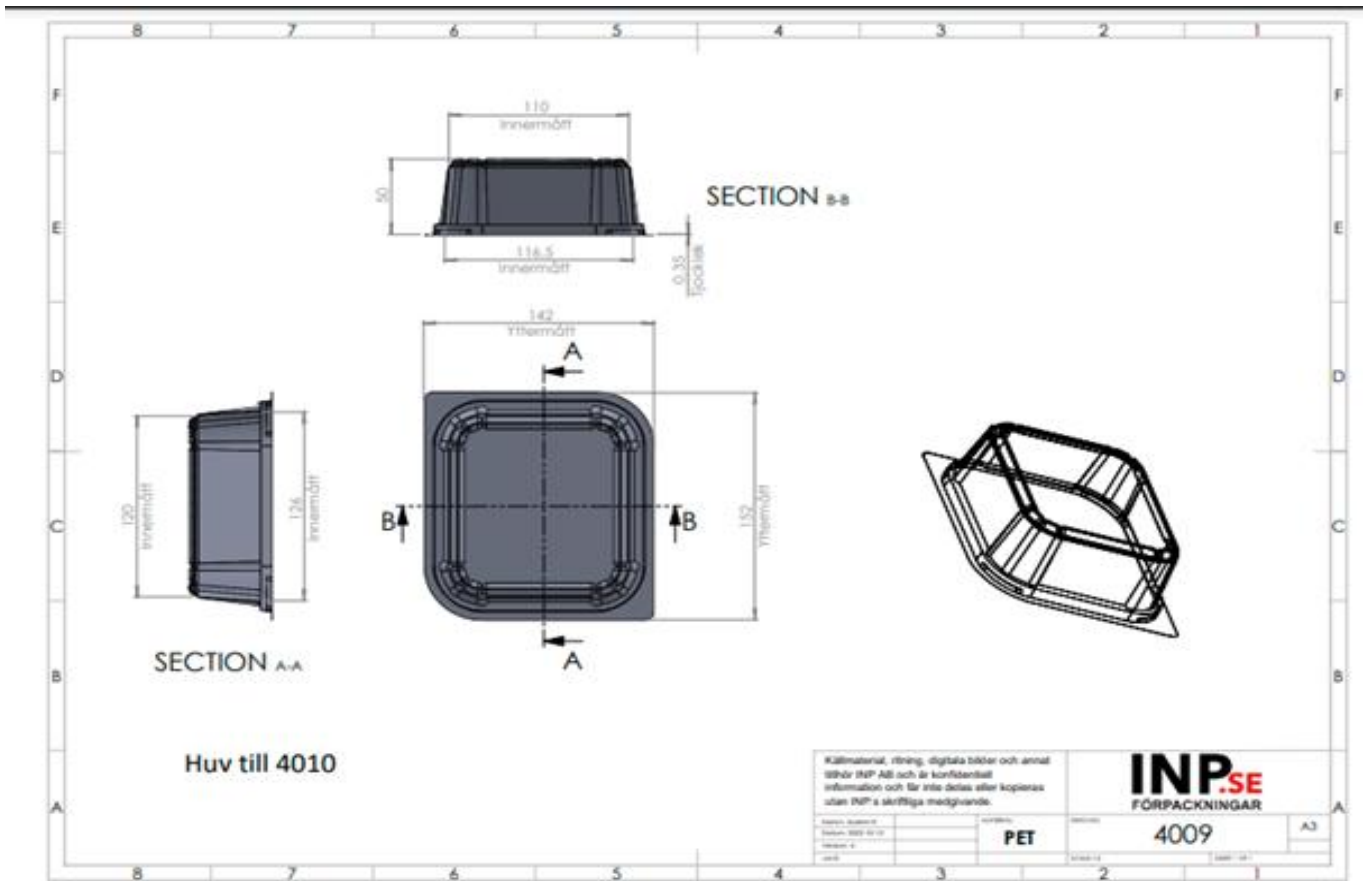


| | | | |
|--|---------------------------------------|--|----------------|
|  | ARTICLE NUMBER | | |
| | P-4009-1 | | |
| | ARTICLE NAME | | |
| | Bageri Lock Låg | | |
| | LINK TO OUR CATALOUGE | | |
| PRODUCT | | | |
| Capacity: | |   | |
| Netweight g: | 10,5 | | |
| Material: | R-PET 100% R-PET | | |
| Color: | Transparent | | |
| Food approved | Yes | | |
| Temp: | -40 / +70 | | |
| WELLBOX | | | |
| Box dimensions | Length: | Depth: | Height: |
| mm | 780 | 390 | 480 |
| Pcs/box: | 570 | | |
| Innerbag (PE) g: | 40 | | |
| Box weight g: | 870 | | |
| Total box weight kg: | 6,895 | | |
| GS1-art: (GTIN) | 7350126540472 | | |
| PALLET EUR ISPM Cert | | | |
| Box/layer: | 3 | | |
| Layers/pallet: | 4 | | |
| Box/pallet: | 12 | | |
| Product/pallet: | 6 840 | | |
| Pallet weight kg (excl pall): | 82,74 | | |
| Pallet height cm (excl pall): | 1920 | | |
| INP Solutions AB • Blockvägen 7 • 341 32 Ljungby E-mail: cb@inp.se • Webbsite: INP.se | | | |



PRODUCT SHEET/DRAWING BELONGS TO INP AB AND IS CONFIDENTIAL