

# DYMO®

## RHINO™ 6000+ Industrial Labeler, Kit Case



January 2022

# Rhino™ 6000+ Industrial Labeler



© Newell Brands



**DYMO**

## Feature-packed Industrial Labeler with PC Connection

- Create labels including barcodes and complex label layouts from DYMO ID™ software on PC and print with Rhino™ 6000+ for easy editing
- Meets key ANSI and TIA/EIA-606-B industry labeling standards
- Exclusive, one-touch “Hot Keys” automatically size, space and format label text for electrical and patch panels, terminal and 110 blocks, wire and cable flags, horizontal and vertical wraps, vertical and fixed-length applications including 5-line print capability
- Print 8 barcode types including Code 39, Code 128, Codabar, UPC A/E, EAN 8/13, PDF 417, code 39 mod 43 variant and QR code
- Symbol library includes more than 250 pre-programmed industry symbols, terms, fractions and punctuation marks



# Rhino™ 6000+ Industrial Labeler



© Newell Brands



**DYMO**

## Feature-packed Industrial Labeler with PC Connection

- Always use authentic DYMO® Industrial Rhino™ labels for guaranteed high-quality output
- Prints up to 24 mm– wide industrial-strength flexible nylon, permanent polyester and vinyl Rhino™ labels, plus heat-shrink tubes, non-adhesive labels and self-laminating Rhino™ labels
- Prints up to 11 Rhino™ Industrial tapes without recharging when using included rechargeable battery pack
- Robust auto-cutter cuts up to 7000 labels without cleaning
- On screen label preview of downloaded labels with the zoom feature
- One-touch powered label cutter and cassette ejection system for effortless labeling and reloading
- Easily change the printer's language settings, choosing from 20 available languages also including French (Canadian), Spanish (Colombian), Portuguese. Portuguese (Brazil)



# Rhino™ 6000+ Industrial Labeler



## Intuitive Graphical Interface

Create, edit and preview multiple labels on our largest backlit LCD

## One-touch Power Assisted Cutter

Eliminate the fatigue of manual cutting and increase efficiency

## Hot Keys

Eliminate guess work, complicated menus and enjoy fast and easy formatting of commonly-used label types

## Save your Labels

Customize over 1000 labels with logos and symbols – and recall them instantly



## Quick-Charge Rechargeable Battery

With on-screen battery life indicator

## Symbols

Over 100 pre-programmed Industry symbols

## Library

Over 150 pre-programmed Industry terms and the ability to customize your own library of terms

## Powerful Serialization

Built-in wizard for simple and advanced serialization

## Integrated Impact Bumpers

Protects against harsh conditions while allowing easy access to label cartridge

## PC Connectivity

# Rhino™ 6000+ Industrial Labeler - Improvements



Features	Rhino™ 6000	Rhino™ 6000+
Auto-Cutter	yes	Improved
AA Battery Life	yes	66% longer
AA Battery Load	3 x 7m D1 cassettes of printing.	5 x 7m D1 cassettes on AA
New 1D Barcodes	yes	New Codabar
New 2D barcodes		New QR and PDF417
Templates	yes	Added Patch Panel
Symbols	yes	Warning Symbols, Fractions (Numbers), Arrows and Shapes added
Label Types	yes	New label types –110 Block, Self laminate, improved Vertical Breaker, General label, Patch Panel, Improved Terminal Block

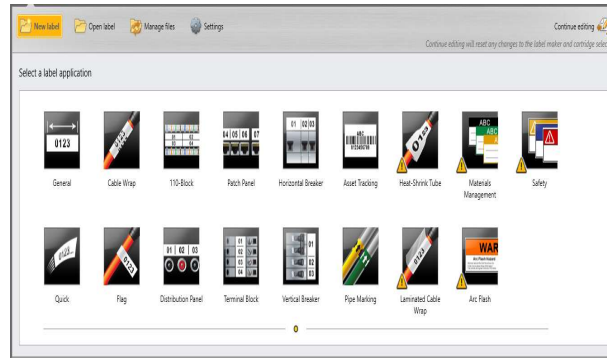
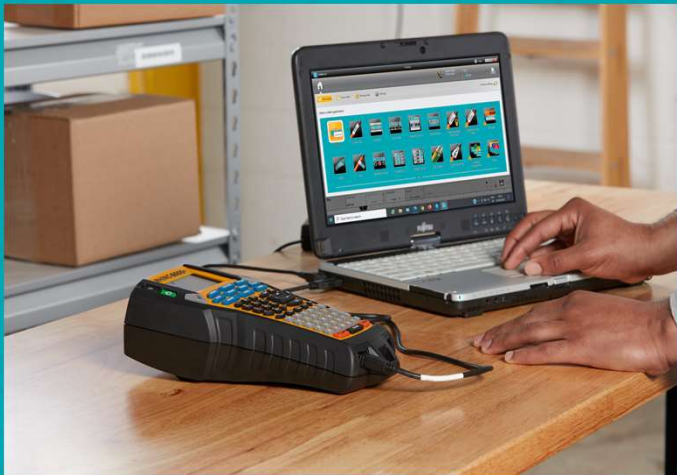
## Rhino™ 6000+ Industrial Labeler - Improvements



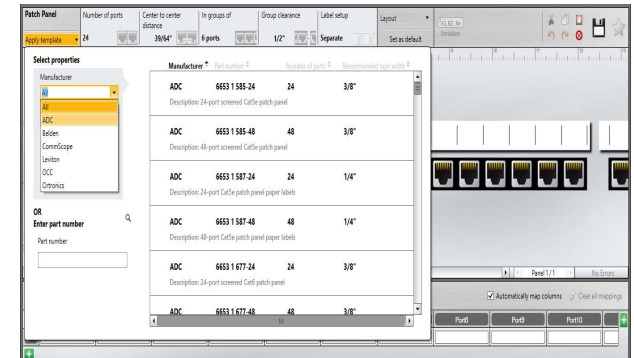
**DYMO**

- Improved Robustness to Auto Cutter
- Longer Rechargeable and AA Battery Life (>66%)
- Original R6000 AA and Li Battery could achieve 3 x 7m D1 cassettes of printing (180 x 14cm labels). New R6000+ can achieve 5 x 7m D1 cassettes on AA (270 x 14cm labels 66% increase in battery life) and Li Battery up to 9 x 7m D1 cassettes (480 x 14cm labels 200% increase in battery life)
- Implementation of New 1D Barcode (Codabar) and 2D barcodes (QR and PDF417)
- Added Patch Panel Templates
- Warning Symbols, Fractions (Numbers), Arrows and Shapes added
- Complex 2D Layout of General, Asset Tracking and Materials Management Labels
- New label types –110 Block, Self laminate, improved Vertical Breaker, General label, Patch Panel, Improved Terminal Block

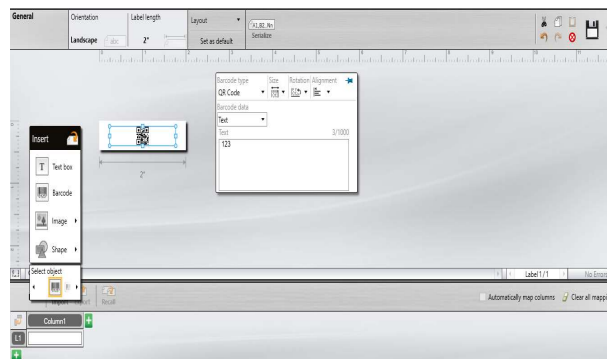
# DYMO ID™ - Software



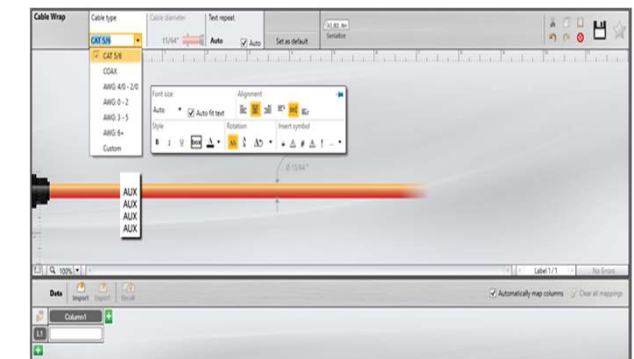
Home screen with various label layout options



Multiple label templates available from leading patch panel manufacturers



Ability to add QR codes to label (new feature for Rhino™ 6000+)



Cable wrap layout provides various cable sizes and depicts in WYSIWYG format

# Rhino™ 6000+ Industrial Labeler

Rhino™ 6000+ Kitcase Includes:

- Rhino 6000+ Printer
- Rhino™- Tape, Vinyl, Black on White, 9mm x 5,5m
- Rhino™- Tape, Nylon, Black on White, 24mm x 3,5m
- Rechargeable Battery Pack
- AC Adapter
- USB cable
- Carry Case
- Quick start guide



**DYMO**



**SKU-Nr.: 2122966**

**RRP: 354,99 €**



# Rhino™ 24 MM Labels



SKU	Product Description
1805430	24mm Black on White Vinyl
1805431	24mm Black on Yellow Vinyl
1734523	24mm Black on White Perm Poly
1805443	24mm Black on White Heat Shrink
1734524	24mm Black on White Flex Nylon
1734821	24mm Black on White Self Lam
1805432	24mm White on Black Vinyl
1805444	24mm Black on Yellow Heat Shrink Tube
1734525	24mm Black on Yellow Flexible Nylon

# Rhino™ 6000+ Industrial Labeler

Available:

- Launch 1.1.2022
- Premium Packaging
- Product Images – Available
- Price – Available
- Sales Sheet – Available
- Log-Data - Available

Work in Progress - POS-Assets:

- Video – available end November\*\*\*\*
- 4-Page Brochure\*
- 8-Page Brochure for Rhino™ Family\*\*
- Cross Sell / Up Sell
- Roll Up Banner\*\*\*



\*



\*\*



\*\*\*



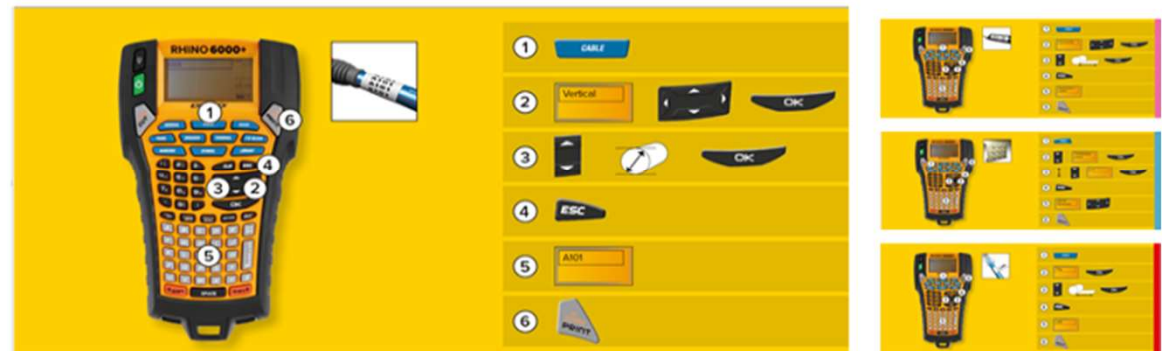
\*\*\*\*



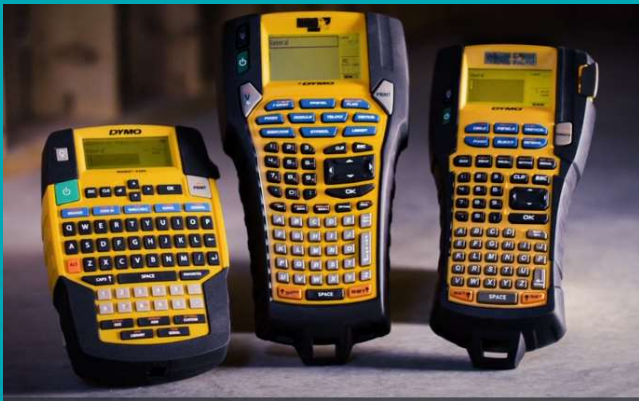
# Rhino™ 6000+ Industrial Labeler

Work in Progress - POS-Assets:

- Quick User Guide:
  - Printed on FSC® paper
  - Durable laminated paper with O-wire binding
  - Item will be included into RHINO™ 6000+ kit case as well
  - SKU Number: xxxx



# Rhino™ Product Family



	Rhino™ 4200 Kit	Rhino™ 5200 HCK	Rhino™ 6000+ HCK
Tape Width	19 mm	19 mm	24 mm
Keyboard	QWERTY	ABC	ABC
Memory	25	100	1000
Lines on Screen	1	2	3
Lines on Tape	4	5	5
Barcodes	2	2	6
Fixed & General	YES	YES	YES
Cable Mgmt.	YES	YES	YES
Patch Panel	NO	YES	YES
110 Blocks	NO	YES	YES
Terminal Blocks	NO	YES	YES
Basic Serial	YES	YES	YES
Advanced Serial	NO	YES	YES
Li-ion Capable	YES	YES	YES
Li-ion Included	YES	YES	YES
Custom Graphic	NO	NO	YES
Excel Import	NO	NO	YES
PC Connect	NO	NO	YES